

COMPASS

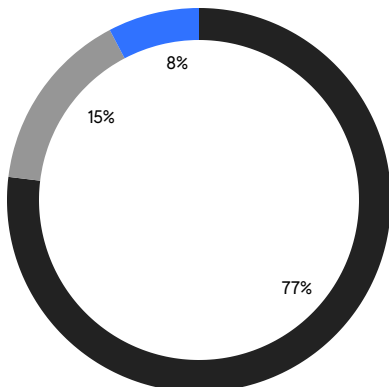
QUEENS WEEKLY LUXURY REPORT



46-30 CENTER BLVD, UNIT 1204

RESIDENTIAL CONTRACTS
\$1.25 MILLION AND UP

- NORTHEASTERN QUEENS
- NORTHWESTERN QUEENS
- CENTRAL QUEENS



13

CONTRACTS SIGNED
THIS WEEK

\$19,627,525

TOTAL CONTRACT VOLUME

The Queens luxury real estate market, defined as all properties priced \$1.25M and above, saw 13 contracts signed this week, made up of 2 condos, and 11 houses. The previous week saw 11 deals. For more information or data, please reach out to a Compass agent.

\$1,509,810

AVERAGE ASKING PRICE

\$1,399,888

MEDIAN ASKING PRICE

\$863

AVERAGE PPSF

2%

AVERAGE DISCOUNT

\$19,627,525

TOTAL VOLUME

108

AVERAGE DAYS ON MARKET

34 North Drive in Whitestone entered contract this week, with a last asking price of \$2,050,000. Originally built in 1935, this single-family house spans 3,096 square feet with 6 beds and 2 full baths. It features a stucco exterior, hardwood and stone floors, wooden doors, a living room with fireplace, a paver driveway, a large second-floor terrace, a landscaped front yard with mature plantings, and much more.

Also signed this week was 3-18 148th Street in Whitestone, with a last asking price of \$1,899,000. Built in 1993 and renovated in 2003, this single-family house spans 2,444 square feet with 3 beds and 2 full baths. It features a paver front entrance, a grand entry foyer with cathedral ceiling and porcelain flooring, Venetian plaster crown moldings, a formal dining room, a custom eat-in kitchen with cherry wood cabinets and granite countertops, and much more.

2

CONDO DEAL(S)

0

CO-OP DEAL(S)

11

TOWNHOUSE DEAL(S)

\$1,293,875

AVERAGE ASKING PRICE

\$0

AVERAGE ASKING PRICE

\$1,549,071

AVERAGE ASKING PRICE

\$1,293,875

MEDIAN ASKING PRICE

\$0

MEDIAN ASKING PRICE

\$1,480,000

MEDIAN ASKING PRICE

\$1,455

AVERAGE PPSF

\$744

AVERAGE PPSF

891

AVERAGE SQFT

2,317

AVERAGE SQFT



34 NORTH DRIVE

Whitestone

TYPE	TOWNHOUSE	STATUS	CONTRACT	ASK	\$2,050,000	INITIAL	\$2,298,000
SQFT	3,096	PPSF	\$662	BEDS	6	BATHS	2.5
FEES	\$1,356	DOM	81				



3-18 148TH ST

Whitestone

TYPE	TOWNHOUSE	STATUS	CONTRACT	ASK	\$1,899,000	INITIAL	\$1,899,000
SQFT	2,444	PPSF	\$777	BEDS	3	BATHS	2.5
FEES	\$980	DOM	92				



150-60 POWELLS COVE BLVD

Whitestone

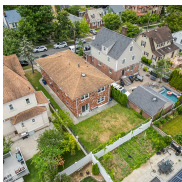
TYPE	TOWNHOUSE	STATUS	CONTRACT	ASK	\$1,850,000	INITIAL	\$1,850,000
SQFT	3,077	PPSF	\$601	BEDS	4	BATHS	3.5
FEES	\$1,415	DOM	37				



214-12 27TH AVE

Bay Terrace

TYPE	TOWNHOUSE	STATUS	CONTRACT	ASK	\$1,628,000	INITIAL	\$1,628,000
SQFT	N/A	PPSF	N/A	BEDS	4	BATHS	2.5
FEES	\$1,167	DOM	12				



157-29 12TH ROAD

Whitestone

TYPE	TOWNHOUSE	STATUS	CONTRACT	ASK	\$1,480,000	INITIAL	\$1,480,000
SQFT	2,554	PPSF	\$580	BEDS	4	BATHS	3
FEES	\$1,208	DOM	6				



149-17 DELAWARE AVE

Flushing

TYPE	TOWNHOUSE	STATUS	CONTRACT	ASK	\$1,480,000	INITIAL	\$1,480,000
SQFT	1,987	PPSF	\$745	BEDS	4	BATHS	1
FEES	\$750	DOM	29				

Compass is a licensed real estate broker and abides by Equal Housing Opportunity laws. All material presented herein is intended for informational purposes only. Information is compiled from sources deemed reliable but is subject to errors, omissions, changes in price, condition, sale, or withdrawal without notice. No statement is made as to the accuracy of any description. All measurements and square footages are approximate. This is not intended to solicit property already listed. Nothing herein shall be construed as legal, accounting or other professional advice outside the realm of real estate brokerage.



85-21 262ND ST

Floral Park

TYPE	TOWNHOUSE	STATUS	CONTRACT	ASK	\$1,399,888	INITIAL	\$1,499,000
SQFT	2,881	PPSF	\$486	BEDS	4	BATHS	3.5
FEES	\$1,037	DOM	146				



84-55 252ND ST

Bellerose Manor

TYPE	TOWNHOUSE	STATUS	CONTRACT	ASK	\$1,365,000	INITIAL	\$1,400,000
SQFT	840	PPSF	\$1,625	BEDS	5	BATHS	4
FEES	\$512	DOM	226				



29-18 41ST AVE #25D

Astoria

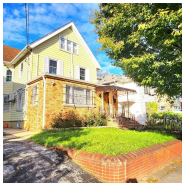
TYPE	CONDO	STATUS	CONTRACT	ASK	\$1,317,750	INITIAL	\$1,317,750
SQFT	864	PPSF	\$1,526	BEDS	2	BATHS	2
FEES	\$1,337	DOM	92				



39-38 222ND ST

Bayside

TYPE	TOWNHOUSE	STATUS	CONTRACT	ASK	\$1,299,999	INITIAL	\$1,299,999
SQFT	2,000	PPSF	\$650	BEDS	4	BATHS	2.5
FEES	\$992	DOM	11				



85-56 151ST ST

Briarwood

TYPE	TOWNHOUSE	STATUS	CONTRACT	ASK	\$1,299,000	INITIAL	\$1,379,000
SQFT	2,750	PPSF	\$472	BEDS	5	BATHS	4
FEES	\$738	DOM	134				



160-19 24TH AVE

Flushing

TYPE	TOWNHOUSE	STATUS	CONTRACT	ASK	\$1,288,888	INITIAL	\$1,288,888
SQFT	1,540	PPSF	\$837	BEDS	3	BATHS	2.5
FEES	\$673	DOM	40				

Compass is a licensed real estate broker and abides by Equal Housing Opportunity laws. All material presented herein is intended for informational purposes only. Information is compiled from sources deemed reliable but is subject to errors, omissions, changes in price, condition, sale, or withdrawal without notice. No statement is made as to the accuracy of any description. All measurements and square footages are approximate. This is not intended to solicit property already listed. Nothing herein shall be construed as legal, accounting or other professional advice outside the realm of real estate brokerage.



24-16 QUEENS PLAZA SOUTH #12A

Long Island City

TYPE	CONDO	STATUS	CONTRACT	ASK	\$1,270,000	INITIAL	\$1,400,000
SQFT	918	PPSF	\$1,384	BEDS	2	BATHS	2
FEES	\$1,333	DOM	495				

Compass is a licensed real estate broker and abides by Equal Housing Opportunity laws. All material presented herein is intended for informational purposes only. Information is compiled from sources deemed reliable but is subject to errors, omissions, changes in price, condition, sale, or withdrawal without notice. No statement is made as to the accuracy of any description. All measurements and square footages are approximate. This is not intended to solicit property already listed. Nothing herein shall be construed as legal, accounting or other professional advice outside the realm of real estate brokerage.

© 2024 Compass. This report and information provided in this report are proprietary to Compass and may not be sold, used or reprinted, in whole or part, without the prior written consent in each instance of Compass. Data is subject to revision. Sourced from Compass proprietary database. All rights reserved.

[compass.com](https://www.compass.com)